



AMERICA'S CUP CLASS

PUBLIC INTERPRETATION No 10

August 10, 2005

Page 1 of 2

In response to the following:

Rules 20.1, 20.3 and 20.4 state

- 20.1 The minimum horizontal distance from a hatch opening to the adjacent sheerline shall be 800 mm.*
- 20.3 There may be only one hatch forward of the mast. The maximum area of this hatch opening shall be 2.0 square metres.*
- 20.4 There may be a maximum of four hatches aft of the mast. The combined area of these hatch openings shall not exceed 3.0 square metres. Hatches required in ACC Rule 20.7 shall not be included in the limitations of this rule.*

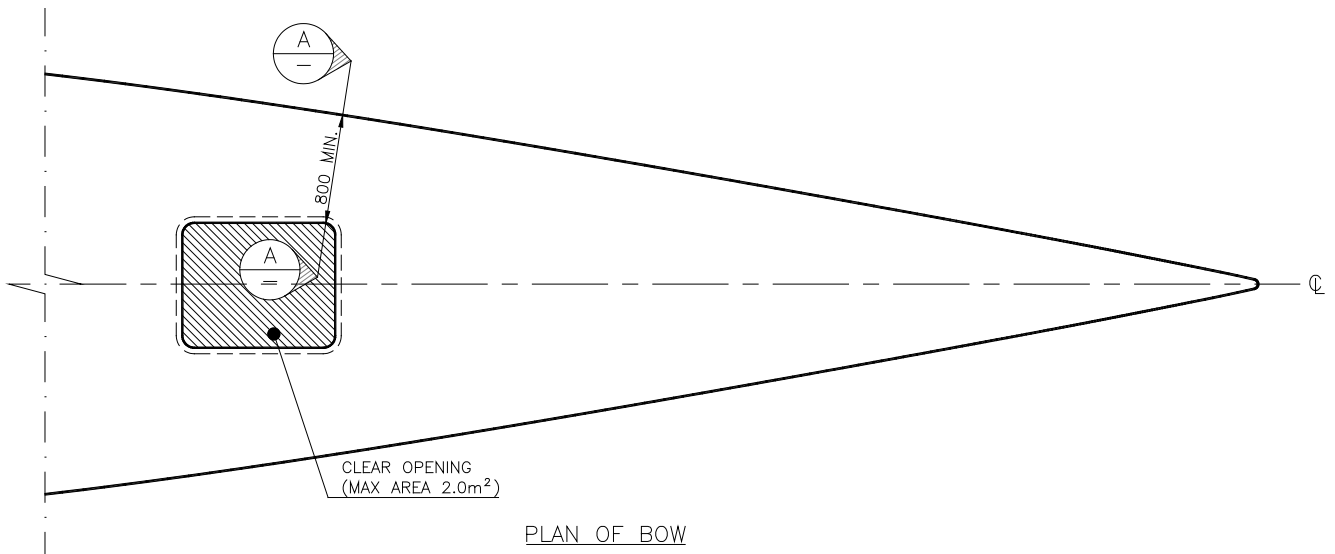
For the purposes of Rules 20.1, 20.3 and 20.4, what part of a hatch is regarded as the hatch opening?

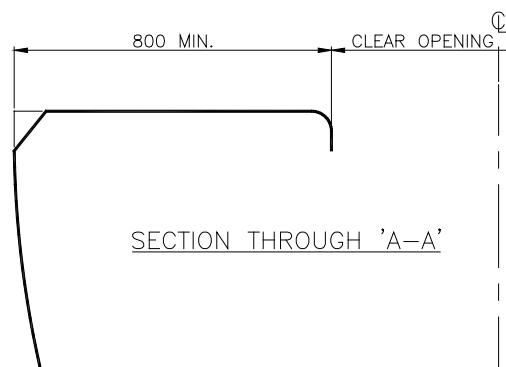
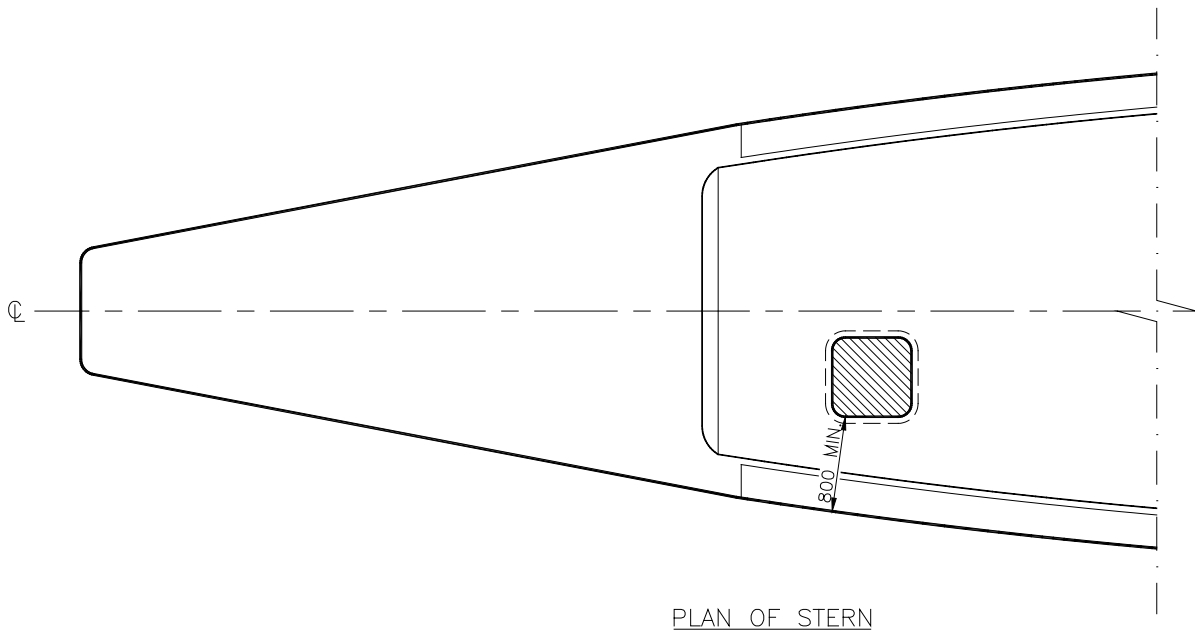
INTERPRETATION

For the purposes of Rules 20.1, 20.3 and 20.4 a “hatch opening” shall be deemed to be the clear opening of the hatch as shown in the following sketches.

For the purposes of Rule 20.1 the minimum distance from a hatch opening to the adjacent sheerline shall be to the nearest part of the clear opening from the sheerline as shown in the following sketches.

Additionally for the purposes on Rule 20.3 and 20.4 the “area of the hatch opening” is deemed to be the area of the hatch opening viewed in plan.





END

This interpretation is made by the CORD Measurement Committee in accordance with Rule 3.3 of Version 5.0 of the America's Cup Class Rule.

Ken McAlpine
ACC Technical Director
117 Marine Terrace, Fremantle,
W.A. 6160 AUSTRALIA
Phone 61 8 9336 6664
Fax 61 8 9336 6665
Email 76122.2173@compuserve.com